



**Built to perform**



**MUTOH**

*ValueJet* Series

*ValueCut* Series



## When Quality, Flexibility and Reliability really matter!

At Mutoh, every industry development presents us with a new challenge, the challenge to improve on it and use our experience to go beyond the expected, to achieve the ideal balance between efficiency, reliability and print / cut / print-to-cut quality.

That's why Mutoh has been at the forefront of the wide-format industry for more than 20 years. As an innovative developer and manufacturer of wide-format printers and cutters, we incorporate our pioneering technology into everything we do to bring you the best equipment for your application. Our core philosophy is to deliver products with technology proven to be faster, more reliable, more cost effective and more efficient.

Applying this philosophy, we created the **ValueJet wide-format printers** and the **ValueCut cutting plotters**.

**ValueJet**  
Series

**ValueCut**  
Series

## Built to Perform – Made in Japan

At Mutoh we understand that your equipment needs to be built to perform. That is why innovation and craftsmanship are at the heart of our ValueJet & ValueCut range.

Built to deliver fit-for-purpose quality at all times, Mutoh's **ValueJet printers** are tailored to your needs, enabling you to reproduce your creative ideas exactly as you intended.

The range is available in widths from 63 cm (24") to 264 cm (104") covering **Sign & Display, Specialty / Industrial, Indoor & Digital Transfer as well as Direct to Fabric applications**. All ValueJet printers feature best-in-class inkjet head technology, latest generation electronics and high quality inks. Overall performance is enhanced thanks to Mutoh's innovative Intelligent Interweaving and DropMaster technology, enabling you to deliver the right quality at the lowest cost.

Mutoh printers work as hard as you do – no more over-specified print jobs that take longer and cost more than they should, no more under-specified print jobs that result in inferior quality and risk of repeat business. It's simply 'job done' with a Mutoh ValueJet!

Mutoh's affordable **ValueCut cutting plotters**, available in three widths, are ready for perfect teamwork with any printer capable of printing onto PVC, for contour cutting of pre-printed signs & stickers and for regular lettering jobs.

Find out for yourself – book a demonstration at your nearest authorised Mutoh Reseller.



## > Sign & Display

### Cost-Efficient Flexibility without Compromise

Mutoh ValueJet Sign & Display printers match Mutoh's passion for engineering and quality with your desire for ultimate performance and trouble-free production. They appeal to both established businesses and startups.

Compact and robustly built, they are ideal for **long term outdoor and indoor prints** on a wide range of uncoated and coated substrates: posters, banners, backlit signage, decals, wall coverings, point-of-sale displays, fine art reproduction, pop-ups, vehicle graphics, stickers and much more.

Incorporating the very latest 8-channel piezo drop-on-demand inkjet technology and new generation electronics, the third-generation ValueJet printers offer **increased print speeds and improved print quality**.

ValueJet Sign & Display printers are available in widths of 63 cm / 24", 137 cm / 54", 162.5 cm / 64" and 260 cm (102"). They can be loaded with **Mutoh Eco Ultra or Universal Mild Solvent (UMS) inks**. Prints made with Mutoh Eco Ultra or UMS inks are UV resistant for up to **3 years outdoors**.

The ValueJets will bring you **superior print quality** and will take the headache out of any job, for every application. Whatever the job, it's job done with the ValueJet Sign & Display range!

Mutoh's professional **ValueCut sign cutters** - available in 61 cm (24") - 132 cm (52") - 183 cm (72") widths - complement the ValueJet printer range, for kiss-cutting, contour cutting and through-cutting applications.

#### ValueJet 628: Compact 24" wide desktop eco ultra printer

The ValueJet 628 is Mutoh's smallest sign & display printer offering a great potential to startup businesses, small sign makers, department stores and quick print providers.

Offering a media width of 630 mm (24"), the compact, user-friendly & cost-effective ValueJet 628 has been developed for a wide array of applications ranging from in-store printing, commercial print, signage and print-to-cut applications.

Equipped with a latest generation micro piezo print head, this compact 8 channel desktop ValueJet model delivers high quality prints for indoor & outdoor applications. The printer delivers sellable **production speeds up to 10 m<sup>2</sup>/h**.



> VJ-628 (24.80" / 630 mm)



> VJ-628

**ValueJet 1324 - 1624: Reliable workhorses with true production capabilities**

Easy to install and use, the cost-effective professional single head ValueJet 1324 and 1624 models are ideal for start-up sign shops or established businesses with small to medium print volumes wanting to extend their product offering.

Flexible, reliable and able to deliver excellent print quality for volume production runs as well as short print runs, these printers will prove to be reliable workhorses for a wide range of high-quality outdoor and indoor sign & display prints.

Integrating Mutoh's award winning Intelligent Interweaving print technology, these ValueJets deliver sellable **production speeds up to 16.4 m<sup>2</sup>/h (VJ-1324) and 20.5 m<sup>2</sup>/h (VJ-1624)**



> VJ-1324 (53.97" / 1371 mm)



> VJ-1624 (63.97" / 1625 mm)

**ValueJet 1638X - 2638 : High quality and high speed without compromise**

Incorporating the well-known and reliable ValueJet print technology and built for both high speed & outstanding printing quality, the dual head ValueJet 1638X and 2638 models integrate the very latest piezo print heads on the market. They will address the needs of businesses focusing on both high speed production and top quality print work up to a width of 1.6 m (VJ-1638X) and 2.6 m (VJ-2638).

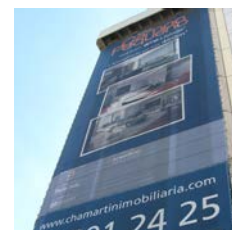
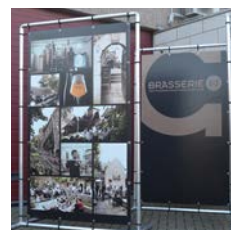
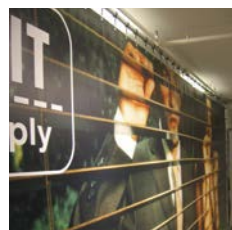
Both models feature two 8 channel piezo heads, in a "staggered setup", resulting in exceptional high speed printing. These ValueJets are ideal for established sign makers who need extra versatility and for larger operations wanting to extend their capacity and flexibility. They will deliver best-in-class speed and superior print quality, without compromising on image quality : **high quality production speeds up to 36 m<sup>2</sup>/h (VJ-1638X) and 39 m<sup>2</sup>/h (VJ-2638).**



> VJ-1638X (63.97" / 1625 mm)



> VJ-2638 (102.36" / 2600 mm)



> Sign & Display

**ValueCut Series : Print and cut at the same time for maximum productivity**

Built for both cutting and print-to-cut applications, ValueCut is a **high performance cutting plotter range**, ready for perfect teaming up with any ValueJet sign & display printer. Enabling the **finest cutting quality with excellent tracking**, the series is available in three models; i.e. ValueCut 600, ValueCut 1300 and ValueCut 1800.

There are many advantages to using a separate printer and cutter workflow, including the ability to print and cut on two machines simultaneously. The Mutoh print-to-cut solution allows you to maintain a productive workflow.

ValueCut integrates a unique job position feature allowing you to reliably contour cut your stickers. The multi-segment feature will allow you to (contour) cut over long lengths with superior accuracy.

The affordable ValueCut cutting plotters will enable signmaking professionals to cover a wide range of applications : window displays, vinyl stickers, vehicle graphics, car stickers, point of purchase, packaging, funny bumper stickers, safety signs, etc..



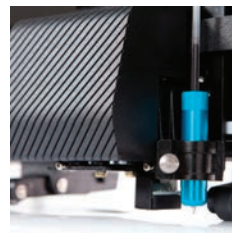
> VC-600



> VC-1300



> VC-1800



	ValueCut 600	ValueCut 1300	ValueCut 1800
Media Loading Width (roll & sheet)	50 - 770 mm	50 - 1594 mm	300 - 1900 mm
Max. Cutting Width	610 mm	1320 mm	1830 mm
Max. Media Thickness	0.8 mm	0.8 mm	0.8 mm
Pinch Rollers	3	4	6
Max. Speed (axial / diagonal)	1080 / 1530 mm/s	1080 / 1530 mm/s	1080 / 1530 mm/s
Acceleration (axial / diagonal)	3.0 / 4.2 G	3.0 / 4.2 G	3.0 / 4.2 G
Max Cutting Force	600 g	600 g	600 g

### The Green Option for Short Run, Personalised High Value Products

Backed by Mutoh expertise and engineering, Mutoh direct-to-textile printers are suited for the production of high quality company flags, country flags, beach flags, personalised advertising, textile gadgets, clothing as well as home decoration fabrics.

Digitally printed fabrics can be easily personalised and sold as **high value products with a "green" label**. Textile prints are more easily re-usable as well as lightweight and readily foldable to make transport far more energy and emission efficient.

**Mutoh direct disperse inks** for use on polyester fabrics are free from VOCs and hazardous components. On open structure fabrics, they provide excellent print-through for double sided flags. The inks offer a high outdoor durability (up to 1 year) and prints are moreover washable.

### ValueJet TD Printers – Highest print quality & extremely versatile

The ValueJet TD series incorporate 8 ink slots and two high end piezo drop on demand 1440 nozzle heads mounted in-line. This will enable users to run 2 times CMYK (high density setup), 8 colours (high gamut setup) or even to run 2 types of ink simultaneously (dye sublimation inks and direct disperse inks). Ultra fine quality prints can be produced, at resolutions up to 1440 dpi.

Setup for **direct-to-fabric printing**, the ValueJet TD can print on recyclable non-stretch polyester fabrics with open or closed structure. This is made possible by the incorporated ink gutter positioned under the printing path, which collects all the ink that is not absorbed by the fabric.

By covering the ink gutter with the easy 'clickable' ink gutter covers, the ValueJet TD can also be used for **sublimation printing onto transfer paper**. Head height is adjustable up to 4 mm, offering maximum substrate compatibility.



> VJ-1628TD (63.97" / 1625 mm)



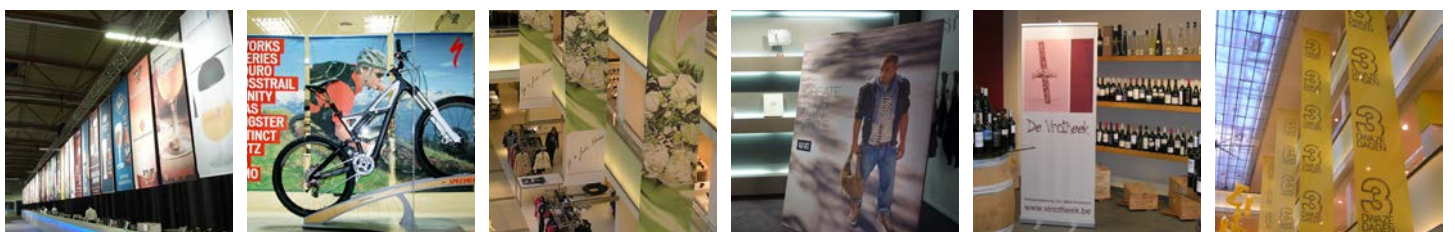
> VJ-2628TD (104.01" / 2642 mm)



> Adjustable print platform



> Tensioning mechanism



**Quality Outputs for Specialty and Industrial Applications**

Mutoh LED UV and bio-solvent MP11 wide format printers have been developed for specific applications such as high quality interior decoration, sign & display graphics, one-off designs of products and their prototypes, thermo-deformation applications, outputs on recyclable media, outputs with a luxurious or specialty finish, specialty industrial items, etc. Typically, these printers will deliver high quality output on roll & rigid media or 3D objects. A wide variety of materials\* can be printed, such as ABS, alu-board, PC, PE, PET, PMMA (acrylic), PP, PS, PVC and glass.

Depending on the printer type, next to CMYK inks, **white and/or varnish inks are available.**

**ValueJet 426UF : A3+ Flatbed LED UV Printer**

The ValueJet VJ-426UF is a compact A3+ flatbed 6-colour LED UV printer with integrated vacuum table. Offering a print table area of 483 mm (19") x 329 mm (13"), the VJ-426UF enables direct printing onto objects up to 70 mm thick.

An energy-efficient latest generation long-life LED UV lamp ensures ultra-sharp, safe & ready to use prints. Its reduced working temperatures also allow printing onto heat sensitive substrates. Using CMYK LED UV inks, the VJ-426UF prints on wide variety of products and their prototypes, even 3D objects\*. With optional white and varnish a luxurious or specialty finish can be achieved.

The multi-purpose VJ-426UF is ideally suited for one-off designs of products, personalised gifts, packing, awards, souvenirs & specialty industrial items.

\* : Ink adhesion will vary depending on substrate type and brand. Individual testing is required.



> ValueJet 426UF – 483 mm (19") x 329 mm (12.95")



**ValueJet Hybrid 1626UH : All-round 64" LED UV Printer**

The ValueJet 1626UH 64" (165 cm) wide 6 colours (C, M, Y, K, White, Varnish) LED UV hybrid printer will deliver high quality prints on a huge variety of roll media and rigid media\* up to 15 mm (0.59"), including ABS, Alu-board, PC, PE, PET, PMMA (acrylic), PP, PS, PVC, uncoated Tyvek® and glass.

The VJ-1626UH allows printing on a wide array of clear media for graphics that stand out. With layers of varnish, you can create special gloss patterns. The printer can be set up in a CMYK or CMYK + White + Varnish configuration.

The ValueJet VJ-1626UH will produce high quality graphics for short viewing distances such as trade show graphics, POP, customised interior decoration, small lot packaging prototypes, banners, posters, etc.

\* : Ink adhesion will vary depending on substrate type and brand. Individual testing is required.

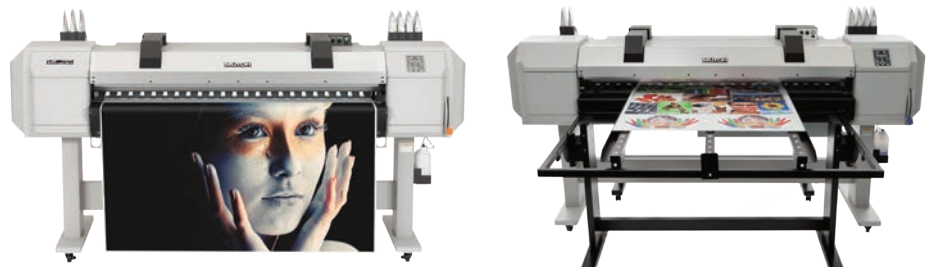


> ValueJet 1626UH (63.97" / 1625 mm)

**ValueJet Hybrid 1617H : Rigid and roll-to-roll printing with renewable resource inks**

The ValueJet Hybrid 64" (165 cm) CMYK + white printer will print on roll media & rigids up to 15 mm. Using Mutoh's renewable resource MP11 Multi-Purpose inks, the VJ1617H delivers high quality prints on a wide variety of roll and rigid media, such as ABS, aluminium sandwich board, cardboard, non-pvc self-adhesive media, PE, PET, PMMA, PP, PVC foam board, recyclable fibre-based paper, uncoated polyester, uncoated Tyvek, etc. The printer can be set up in a CMYK or CMYK + White configuration.

An ideal fit for print providers who supply customers demanding "green output" (recyclable media), this model is the perfect solution for start-up companies as well as established print businesses wanting short run production of roll prints and panel creation for close viewing distances.



> VJ-1617H (63.97" / 1625 mm)





## Soft Signage : Don't Miss the Opportunity !

Expand your business beyond vinyl and banner printing by adding soft signage production to your portfolio with Mutoh's **ValueJet water-based printer series**, available in widths of 162.5 cm / (64"), 191 cm (75") and 260 cm (102"). Explore new revenue opportunities such as high quality in-store textile decoration and displays, textile banners, pop-ups, sportswear, personalised home decoration, gadgets, shirts and many more.

In dye sublimation printing, images are printed in reverse onto transfer paper. After printing, a heat press or calender fixes the images onto polyester-based textiles. The heat sublimation process bonds the images permanently into the fabric. **Colours are bright and vibrant. Outputs are durable & washable.** Importantly, unlike other inkjet technologies, the sublimation process does not affect the handling and feel of the material.

## Produce with the environment in mind

Using Mutoh's water-based dye sublimation inks and easily available uncoated recyclable polyester-based materials means there is no need for forced ventilation, as the **inks are free from VOCs and hazardous components**. The prints are also odourless. Soft signage is much easier to pack & ship which reduces transport costs, as it folds easily to reduce space and is of course extremely lightweight. An important plus is that soft signage can be washed (if necessary) and re-used with no fade.

## Increase your profit margins

Water-based dye sub inks, available in bulk bottles, will enable you to lower your cost per copy. Paper prints are produced faster, which increases your productivity. You work with uncoated low-cost readily available polyester fabrics. Plus you offer a higher end luxurious product with premium appearance, touch and feel, which can be sold at a higher price compared to regular vinyl, paper and banner prints.

Mutoh provides turnkey solutions including printer, inks and software – all you need to make a flying start into dye sublimation.

### ValueJet 1624W -1924W - A smart choice for every day sublimation printing

The compact single head ValueJet 1624W / 1924W printers are ideal for every day sublimation printing. They are fit for both startup and established businesses wanting to extend their product portfolio.

The machines deliver a unique mix of high quality output and high speed printing. You don't need to be an expert to run the VJ-1624W/1924W as they are very easy to operate and maintain. Competitively priced, these printers deliver consistent quality for volume production runs as well as short print runs.

Featuring a latest generation 8-channel piezo print head with 8 rows of 180 nozzles, these ValueJets deliver sellable **production speeds up to 38 m<sup>2</sup>/h (VJ-1624W) and 56 m<sup>2</sup>/h (VJ-1924W)**. Ready for volume production, these models can be equipped with various optional motorised take-up systems.



> VJ-1624W (63.97" / 1625 mm)



> VJ-1924W (75" / 1910 mm)

> Indoor & Digital Transfer

ValueJet 1638WX - 1938WX - 2638 Dye Sub - Unrivalled performance for professional volume users

The ValueJet 1638WX (162.5 cm – 64”), 1938WX (191 cm – 75”) and VJ-2638 Dye Sub (260 cm – 102”) dual head high speed, high volume sublimation inkjet printers effortlessly deliver **sellable production speeds up to 65 m<sup>2</sup>/h (VJ-1638WX), 73 m<sup>2</sup>/h (VJ-1938WX) and 78 m<sup>2</sup>/h (VJ-2638)**. Ideally suited for users requiring speed who also put high quality at the top of their wish list!

The fastest transfer paper printers in their price range, the VJ-1638WX/ VJ-1938WX/ VJ-2638 Dye Sub **will print onto the thinnest sublimation papers**. They incorporate the very latest 8-channel piezo head technology. These models feature two print heads, in a “staggered setup”, resulting in exceptional high speed printing without compromising on image quality.

Long unattended print runs are made possible thanks to Mutoh’s optional bulk ink system and a variety of automatic motorised winder systems that will neatly roll up prints, ready for after-treatment.



> VJ-1638WX (63.97" / 1625 mm)



> VJ-1938WX (75" / 1910 mm)



> VJ-2638 (102.36" / 2600 mm)



## > Specifications - Performance

### Key Media & Performance Specifications

#### > Sign & Display

	Max Media Width		Max Print Width		Production Speed Range	Max. Speed <sup>1</sup>
	mm	inch	mm	inch	m <sup>2</sup> /h	m <sup>2</sup> /h
ValueJet 628	630	24.80	620	24.40	2.5 - 10	NA
ValueJet 1324	1371	53.97	1361	53.58	3.9 - 16.4	52
ValueJet 1624	1625	63.97	1615	63.58	5.0 - 20.5	55
ValueJet 1638X	1625	63.97	1615	63.58	10.0 - 36.0	94
ValueJet 2638	2600	102.36	2590	101.97	12.0 - 39.0	108

<sup>1</sup> = Applicability to be judged on individual basis. Media & application dependent.  
NA = Not applicable.

#### > Specialty / Industrial

	Max Media Width		Max Print Width		Production Speed Range	
	mm	inch	mm	inch	4 colour CMYK	CMYK + White + (varnish) <sup>1</sup>
ValueJet 426UF	483 x 329	19 x 12.95	473 x 319	18.62 x 12.55	6 - 28 tables/h	1 - 7 tables/h
ValueJet 1626UH	1625	63.97	1615	63.58	1.34 - 9.50 m <sup>2</sup> /h	0.38 - 2.65 m <sup>2</sup> /h
ValueJet 1617H	1625	63.97	1615	63.58	3.4 - 10.1 m <sup>2</sup> /h	0.4 - 2.5 m <sup>2</sup> /h

<sup>1</sup> = For VJ-426UF & VJ-1626UH : CMYK + white + varnish / For VJ-1617H : CMYK + white

#### > Indoor & Digital Transfer

	Max Media Width		Max Print Width		Production Speed Range	Max. Speed <sup>1</sup>
	mm	inch	mm	inch	m <sup>2</sup> /h	m <sup>2</sup> /h
ValueJet 1624W	1625	63.97	1615	63.58	8.5 - 38	55
ValueJet 1638WX	1625	63.97	1615	63.58	11 - 65	NA
ValueJet 1924W	1910	75.19	1900	74.80	10.8 - 56.2	NA
ValueJet 1938WX	1910	75.19	1900	74.80	14 - 73	NA
ValueJet 2638 Dye Sub	2600	102.36	2590	101.97	17 - 78	108

<sup>1</sup> = Applicability to be judged on individual basis. Media & application dependent.  
NA = Not applicable.

#### > Direct Textile

	Max Media Width		Max Print Width		Production Speed Range	Max. Speed <sup>1</sup>
	mm	inch	mm	inch	m <sup>2</sup> /h	m <sup>2</sup> /h
ValueJet 1628TD	1625	63.97	1605	63.18	8 - 24	41.5
ValueJet 2628TD	2642	104.1	2622	103.22	8 - 24	41.5

> Accessories & Software

Reliable Accessories to Complete a Seamless Solution

Mutoh's core philosophy is to deliver you a robust printer ready for day to day production with reliable inks that are perfectly matched to your application. To complete your ValueJet solution and configure it to your target print volume, we supply a range of optional accessories to make your production process easier, faster and hassle-free.

Our accessories include ink bag adapters, bulk ink systems for long autonomy, different types of motorised unwinding/winding systems (30, 80 and 100 kg) to match your print volumes and infra red dryers.



> 80 kg motorised take-up system with tensioning bar



> 30 kg motorised take-up system with tensioning bar



> torque-controlled motorised take-up system



> Ink Adapter



> Bulk Ink System



> IR Dryer

Software that Meet your Needs

Mutoh works with and supports all the leading RIP vendors to make the best possible drivers, so that you have a choice dependent on budget and application for whichever ValueJet you choose.

Special Mutoh Edition RIP software is available from Onyx Graphics and SAI, covering our entire printer and cutter portfolio.

Whatever your preference of RIP, your investment is safe, since all Mutoh Edition RIP solutions can be easily upgraded as your business grows with either new or extra equipment.



Media

As with our RIP strategy, we work with all the major media suppliers during the development process to ensure our printers deliver Mutoh quality output across a broad range of substrates.

Mutoh printer users can benefit from our extensive ICC/media profile library available on the member site at [www.mutoh.eu](http://www.mutoh.eu)

 > Mutoh Inks

**Peace of Mind with Mutoh Original Inks**

Ink is a crucial part of the printing process. Using inks that work together faultlessly with the print head and media in production to give you optimum performance and output quality is an area Mutoh invest heavily in. We are constantly testing the latest inks and print head technologies in our own chemical labs, to ensure that you are provided with inks that perfectly match your Mutoh system and supplies and that moreover meet the latest REACH regulations.

By conducting stringent quality control, we are able to guarantee batch-to-batch consistency, a perfect match between ink and print head and unequivocal warranties for durability and quality.

Depending on your application, we supply the right ink for our ValueJet range of printers:

**Mutoh Eco Ultra inks** are Mutoh's most popular inks for outdoor sign & display applications on a wide range of uncoated and coated substrates. The inks are based on non-aggressive solvents and do not spread any harmful VOCs in the working environment.

Available in easy-to-use cassettes or litre bags, Eco Ultra inks are Mutoh's third generation of eco inks featuring improved ink fixation, better drying and improved scratch resistance. Last but not least, they enable higher print speeds. Prints made with Eco Ultra inks are water-resistant and offer a UV outdoor resistance of up to three years.\*

\* : For heavy-duty applications where mechanical stress is involved (floor & vehicle graphics), lamination is required. Stabilisation is required prior to lamination.



**Mutoh's Universal Mild Solvent inks (UMS)** are Mutoh's fourth generation mild solvent inks. The UMS inks have been specifically developed for volume-oriented users. Available in cassettes & bulk liter bottles, the UMS inks feature best-in-class ingredients for optimum speed and quality performance.

The inks are based on a new selection of milder & non-aggressive solvents and do not spread any harmful VOCs in the working environment. They are virtually odour-free and do not require any forced ventilation. The Mutoh UMS CMYK ink set covers 83 % of the Pantone C® colour chart.

The unique mix of nano size, high durability pigments & resins will individually encapsulate each colour pigment, enables optimum adhesion of the pigments to the substrate and creates a uniform, smooth - gloss preserving - ink layer. Prints made with UMS inks are water resistant and offer an outdoor UV-resistance of up to three years\*.

\* : For heavy-duty applications where mechanical stress is involved (floor & vehicle graphics), lamination is required. Stabilisation is required prior to lamination.



 > Mutoh Inks

Mutoh's CMYK LED UV inks, with optional **white and varnish** for a luxurious or specialty finish, have been specifically developed for Mutoh's specialty / industrial UV printers. Available in cassettes, the LED UV inks feature best-in-class ingredients for ultra-sharp, high quality outputs.

Compared to "classic" UV printing, Mutoh LED UV technology provides you all state-of-the-art health & safety and environmental benefits: no ozone generation, free of mercury and lead. Moreover, Mutoh's LED UV inks and varnish are completely VOC-free and do not contain any hazardous air pollutants (non-HAP).

An energy-efficient latest generation LED UV lamp ensures ultra-sharp, safe & ready to use prints. Its reduced working temperatures also allows printing onto heat sensitive substrates. Mutoh's LED UV inks print on a roll & rigid materials\* and onto a wide variety of products and their prototypes, even 3D objects.

\* : Ink adhesion will vary depending on substrate type and brand. Individual testing is required



Mutoh MP11 Multi-Purpose CMYK + White inks for the ValueJet VJ-1617H model are suited for both rigid and roll media. The inks will deliver high quality prints on a wide range of uncoated environmentally friendly low-cost substrates. Compatible media types are ABS, aluminium sandwich board, cardboard, non-pvc self-adhesive media, PE, PET, PMMA, PP, PVC foam board, recyclable fibre-based paper, uncoated polyester, uncoated Tyvek, etc.

The inks come in convenient ink packs - CMYK (950 ml) + White (500 ml). The key carrier of the MP11 inks is a renewable resource solvent, derived from corn. The inks are fixed and dried at regular heating temperatures and offer an extensive colour gamut. UV durability outdoors goes up to three years.



Mutoh's water-based CMYK DS2 Universal sublimation inks for transfer and direct printing are 100 % VOC free and do not require any risk labelling. Developed specifically for the latest print heads, the inks offer excellent nozzle stability for high speed and high volume printing and will produce perfect image sharpness and definition. Transfer is possible onto polyester fabrics, mixed fibre fabrics (min. 80 % polyester) or onto polyester coated objects.

The Ökotex Standard 100 compliant Mutoh DS2 inks are odourless, both during the printing and the transfer process. They offer a wide gamut with bright and vibrant colours and furthermore give you excellent light, washing and perspiration fastness properties. UV outdoor durability is between 3 and 6 months.

> Mutoh Inks

Mutoh DS1 series **disperse dye sublimation inks** have been developed for printing on transfer paper & transfer to polyester fabrics & mixed fibre fabrics (minimum 80 % polyester) or to coated polyester objects. Mutoh's dye sub inks are 100 % VOC free and do not contain any hazardous components. They offer excellent nozzle stability for high speed and high volume printing and a UV outdoor durability between 3 and 6 months.

Mutoh DD Series **Direct Disperse inks** are suited for direct printing onto polyester fabrics with open or closed structure. On open structure fabrics, they provide excellent print-through for double sided flags. They are 100 % VOC free and do not contain any hazardous components. Mutoh direct disperse inks offer a large colour gamut for rich and vibrant colours and deliver top scores in light fastness, wash fastness, rubbing and perspiration.



Mutoh's Genuine Inks – Overview & Compatibility

Ink Type	Eco Ultra			UMS		MP11		LED UV
Ink Colours	CMYK			CMYK		CMYK	White	CMYK + Varnish + White
Ink Volume	220 ml C	440 ml C	1000 ml P	440 ml C	1000 ml B	950 ml P	500 ml P	220 ml C
ValueJet 628	X		X					
ValueJet 1324	X		X		X			
ValueJet 1624 / 1638X	X	X	X	X	X			
ValueJet 2638	X	X	X	X	X			
ValueJet 426UF								X
ValueJet 1626UH								X
ValueJet 1617H						X	X	

C = cassette / P = pack / B = bottle

Ink Type	Universal Sublimation (DS2)	Disperse Dye Sublimation (DS1)	Direct Disperse (DD)
Ink Colours	CMYK	CMYK	CMYK
Ink Volume	1000 ml B	1000 ml B	1000 ml B
ValueJet 1624W / 1638WX	X	X	
ValueJet 1924W / 1938WX	X	X	
ValueJet 2638 Dye Sub	X	X	
ValueJet 1628TD / 2628TD	X	X	X

B = bottle



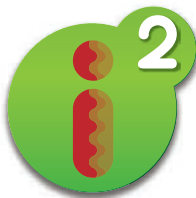
## > Why buy Mutoh?

That's easy. **Because experience matters!** Mutoh is one of the world's leading manufacturers of high quality wide format piezo drop on demand inkjet printers and sign cutting plotters, setting the standard for innovation, quality, excellent customer service and local presence. We have been in business since 1953, starting with high end drafting machines, moving to pen/pencil plotter technology and cutting plotters. We have been active in the wide-format printer industry for more than 20 years. In Europe alone, more than 20000 wide format Mutoh printers and more than 25000 Mutoh cutting plotters have been installed.



### Innovation

Innovation and craftsmanship are at the heart of all our products. Mutoh was the pioneer in eco solvent printing technology back in 2002, revolutionising the outdoor sign & display market. We also developed innovative printing techniques such as our Intelligent Interweaving technology (i2) which prevents banding and facilitates a smooth workflow with best possible print results. We know piezo inkjet technology inside out.



### Quality and Reliability

Quality is the thread that runs through every Mutoh product. We know that our customers' business depends on the reliability of our equipment. Quality is integrated into every step of our production process in accordance with our ISO 9001 certified comprehensive quality management system and ISO 14001 environmental management policy.

All Mutoh products are compliant with the most stringent EU directives with regards to environment, occupational health and safety for equipment owners and operators.





## > Why buy Mutoh?

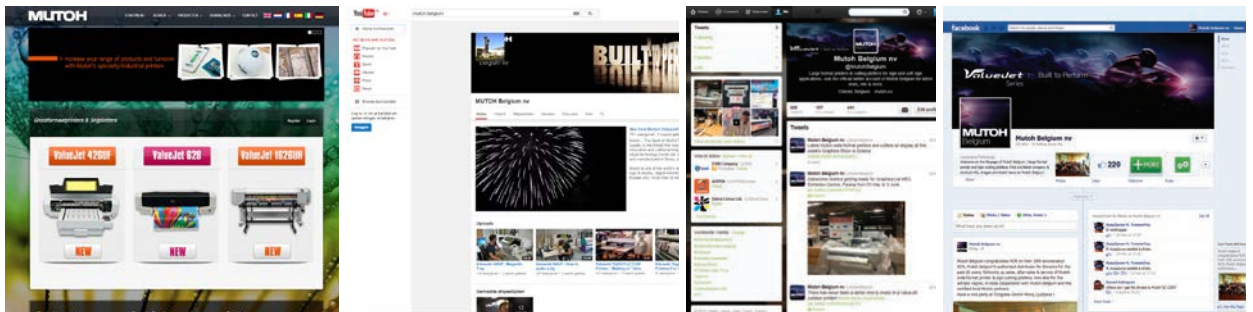
### Local Presence

Mutoh products are distributed and supported by a network of certified Mutoh authorised distributors and Channel Partners trained by Mutoh for sales, installation and after-sales support. Your local authorised reseller will assist you further in defining the right solution for your application, product pricing and return on investment.



### Be part of the Mutoh family

Customer retention is important to us. Mutoh equipment users can create a free member account at [www.mutoh.eu](http://www.mutoh.eu) to benefit from features and essential information on their Mutoh printer or cutting plotter: access to Mutoh's on-line ICC profile library offering more than 2500 ICC profiles for a variety of RIP software; drivers for Mutoh equipment, user's guides, application notes, etc...



In short, we want you to be sure of your Mutoh product – our reputation depends on it.



**MUTOH**

Mutoh Belgium  
<http://www.mutoh.eu>

Mutoh Deutschland  
<http://www.mutoh.de>

Mutoh North Europe  
<http://www.mutohnorth.eu>

Distributed by:

